

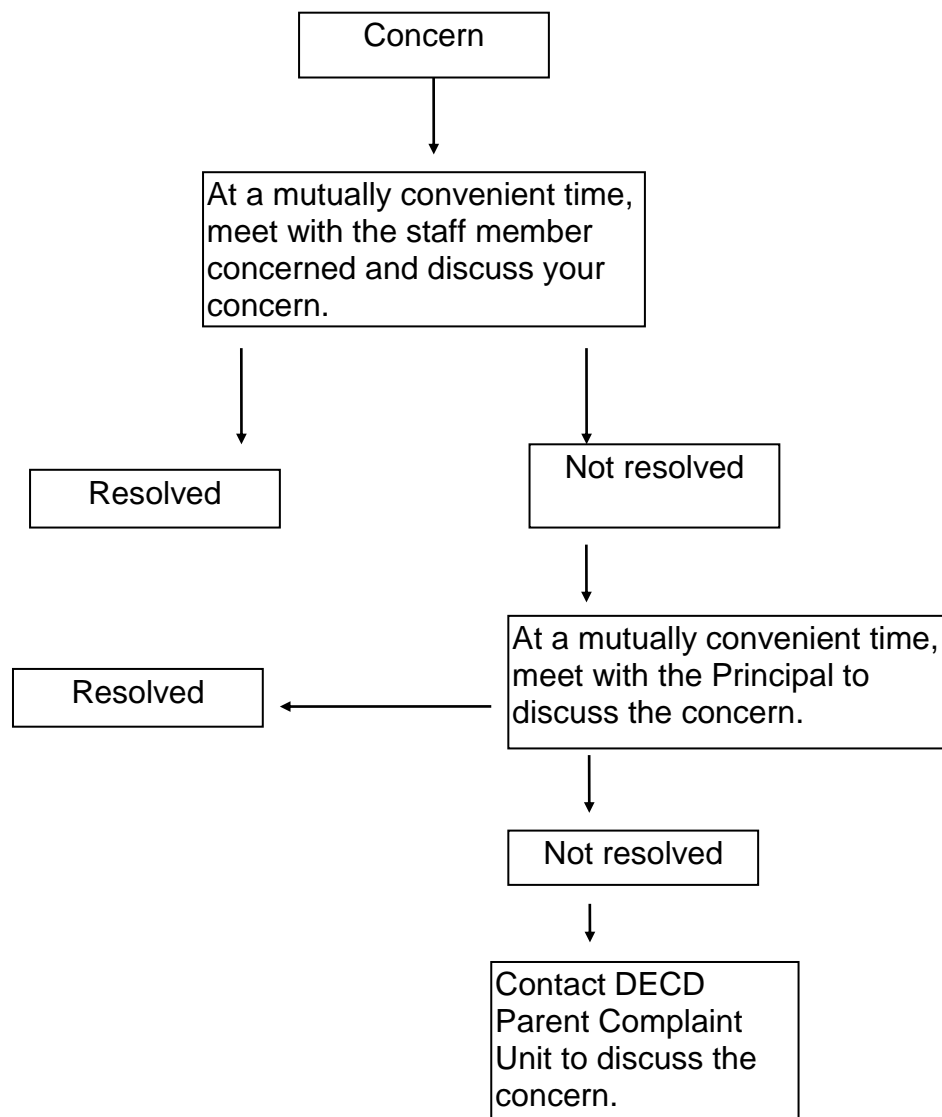
## GRIEVANCE PROCEDURE

In order to maintain an effective and participatory school environment, there must be a clear, simple process for all school and community members to raise grievances relating directly to school operations at Nuriootpa Primary in order that a resolution be reached.

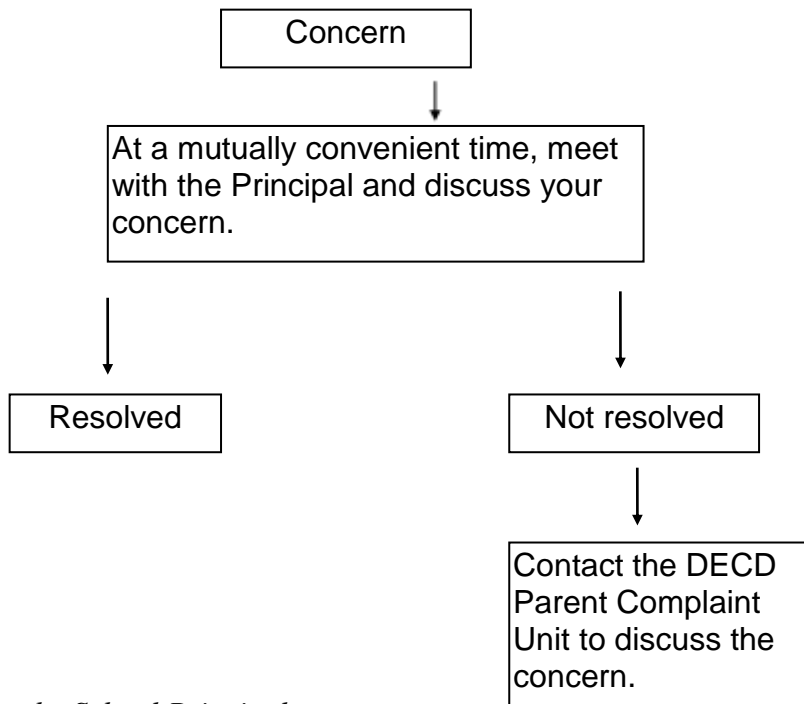
At Nuriootpa Primary School, the following process enables grievances relating to school policy, curriculum, staff and management to be raised, discussed and a resolution reached.

All grievances will be treated with strict confidentiality without fear of reprisals. All matters raised will be treated seriously.

### Grievances related to classroom operations



*Grievances related to School Policy and Operations*



*Grievances related to the School Principal*

